

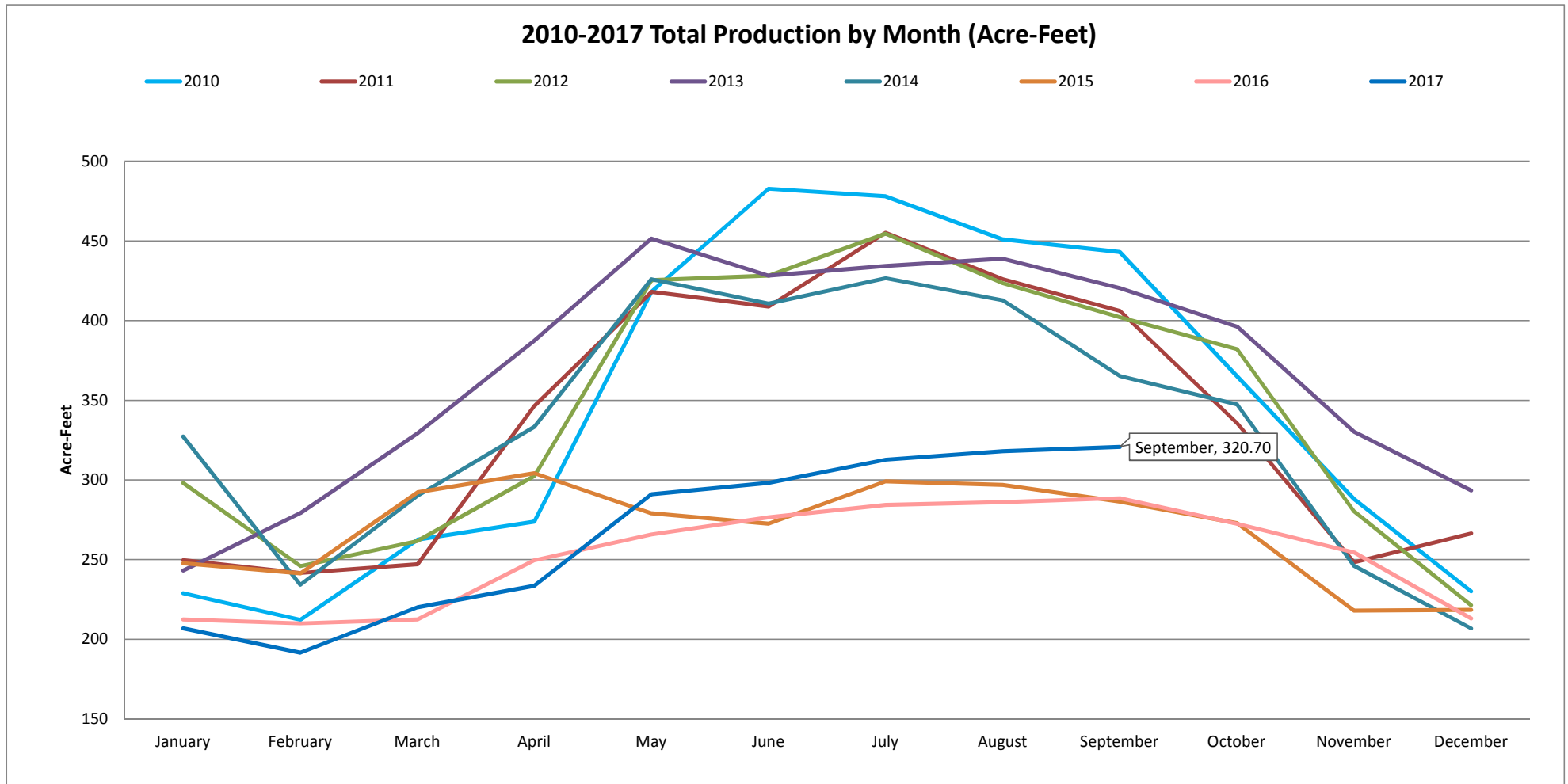
September 2017 Water Production & Consumption Summary Report

- Unlike most years, September water production unexpectedly increased beyond the previous month, up 2.8 AF. Rarely is September production higher than August. This has occurred in the past two years.
- Water production during the last three months has been higher than the production in the same months during the past two years.
- YTD (three months remaining) water production of 2,392.2 AF is only 632.8 AF from last year's total production (which was the lowest in three years). It is likely that the downward annual trend in water production may end this year.
- Monthly water production savings for September was 23.7%. Unlike 2016, monthly water production savings for most months during this year were not greater than 30%.
- Cumulative savings over the last 28 months is 31.2%, easily exceeding the adjusted state mandated conservation standard of 11% production reduction.
- Gallons per capita day (based on gross water production) for the month of September was 100.
- Residential gallons-per-capita-day (based on only a portion of total production equal to residential use) for the month of September was 62.
- The number of billed, metered accounts in Marina fell by 5 (-4 Single-family and -1 commercial account).
- The number of billed, metered accounts in the Ord service area increased by 77 (32 SF, 38 MF, 4 commercial, 3 landscape).

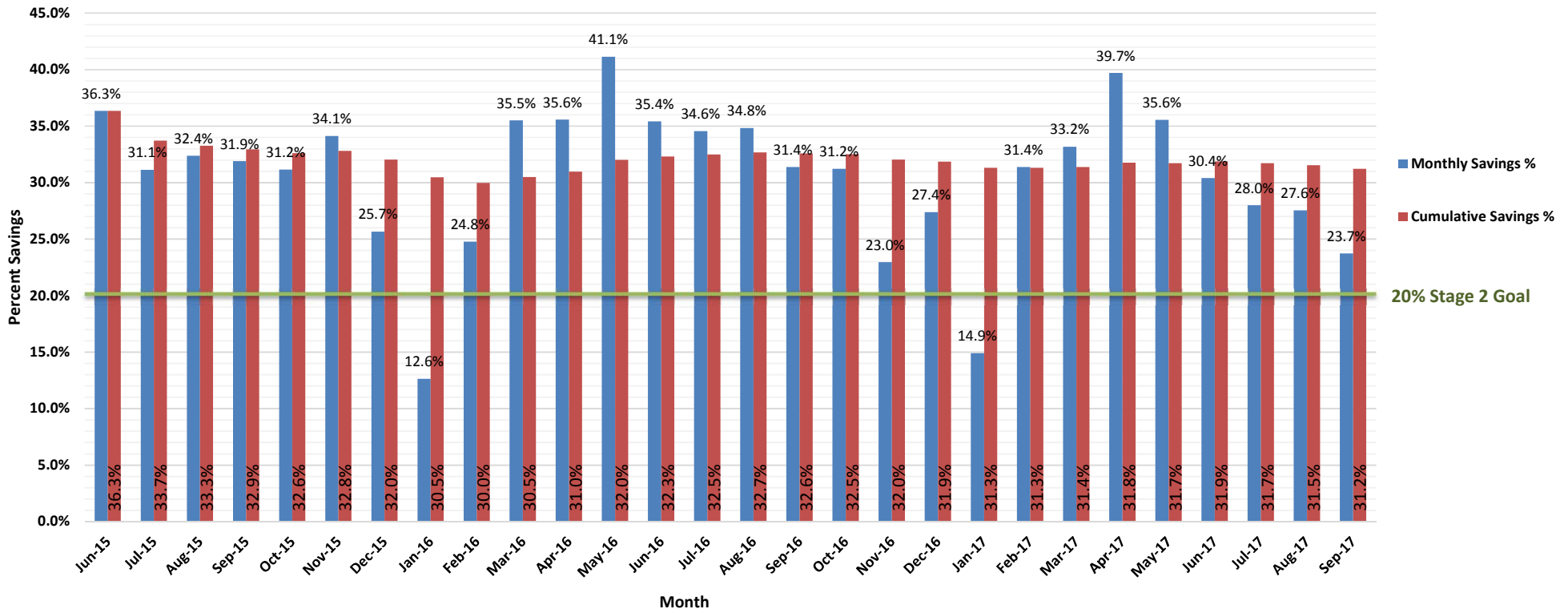
Production by Month (acre-feet)

	2008	2009	2010	2011	2012	2013	2014	2015	2016	2017
January	250.00	339.10	228.90	249.50	297.99	243.06	327.14	247.66	212.37	206.84
February	234.00	218.80	212.10	241.52	245.82	279.08	234.16	241.34	209.91	191.50
March	295.00	277.40	262.40	247.05	261.68	329.29	290.01	292.16	212.37	220.04
April	355.00	349.20	273.70	346.48	302.29	387.29	333.28	304.13	249.50	233.54
May	461.00	379.30	418.00	417.98	425.35	451.43	425.96	278.96	265.77	290.93
June	415.00	385.50	482.70	408.78	428.11	428.11	410.62	272.52	276.51	297.99
July	415.00	415.80	478.00	455.12	454.50	434.25	426.58	299.06	284.18	312.72
August	410.00	395.30	451.00	425.96	423.48	438.85	412.77	296.76	286.02	317.94
September	395.00	371.00	443.00	406.01	402.02	420.44	365.20	286.33	288.48	320.70
October	369.00	326.80	365.00	335.59	382.08	396.27	347.40	272.82	272.52	
November	303.00	308.70	288.00	248.27	280.19	330.21	246.12	217.89	254.41	
December	267.00	270.70	230.00	266.38	221.32	293.26	206.69	218.41	212.98	
TOTAL	4169.00	4037.60	4132.80	4048.64	4124.83	4431.54	4025.93	3228.04	3025.02	2392.20

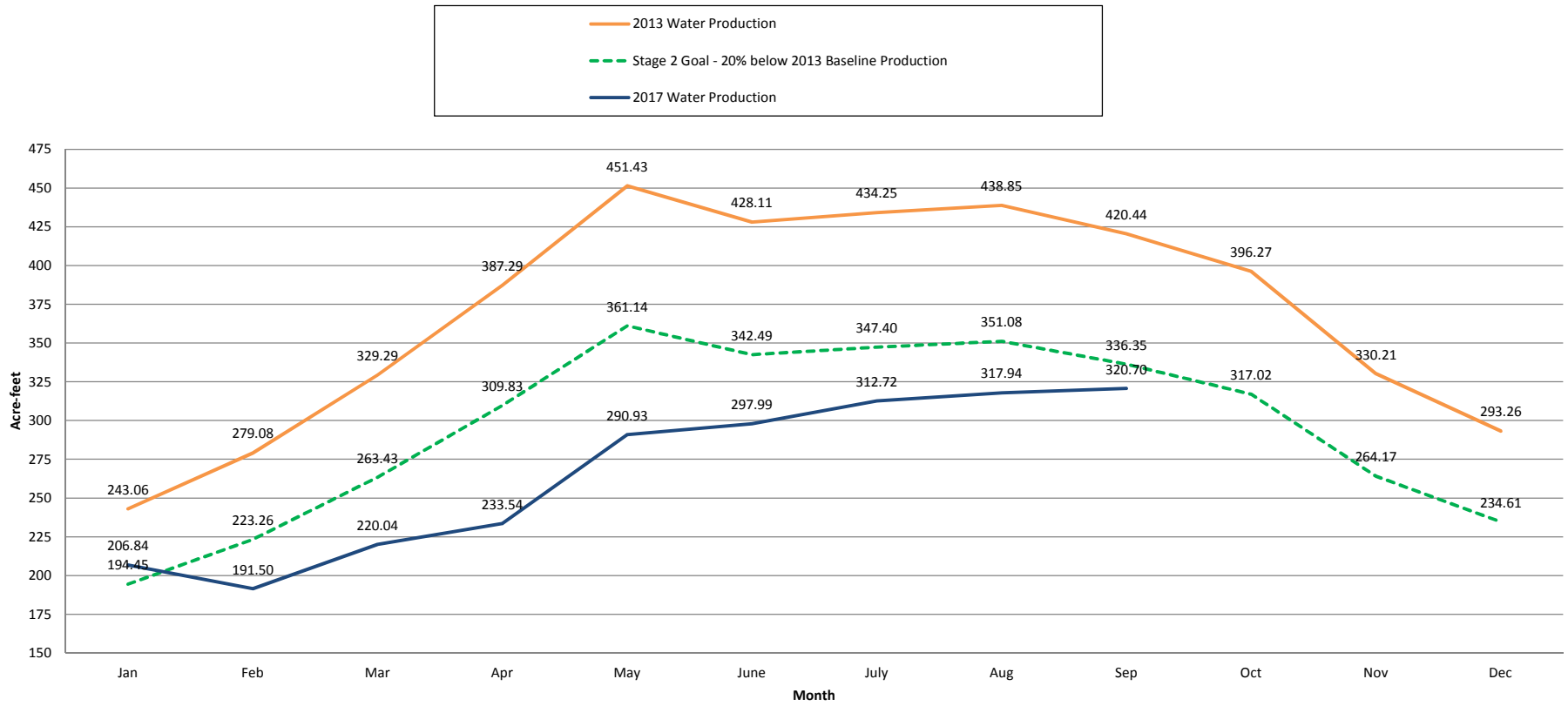
* Production data taken from Marina Coast Water District Well Production Summaries



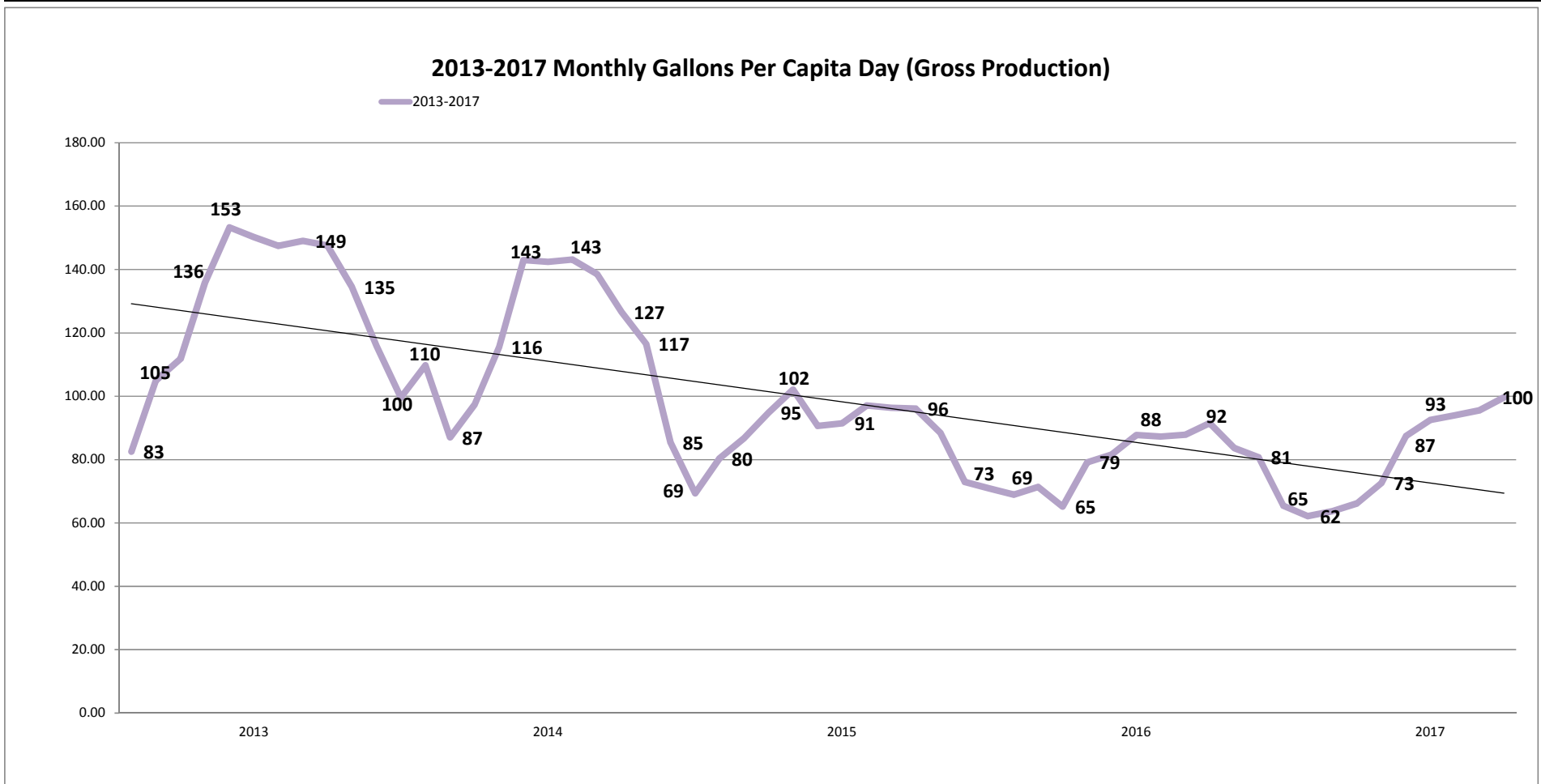
Monthly Production Savings and Cumulative Savings Compared to 2013 June 2015 to Current Month



2017 Production VS. Water Production Reduction Goals

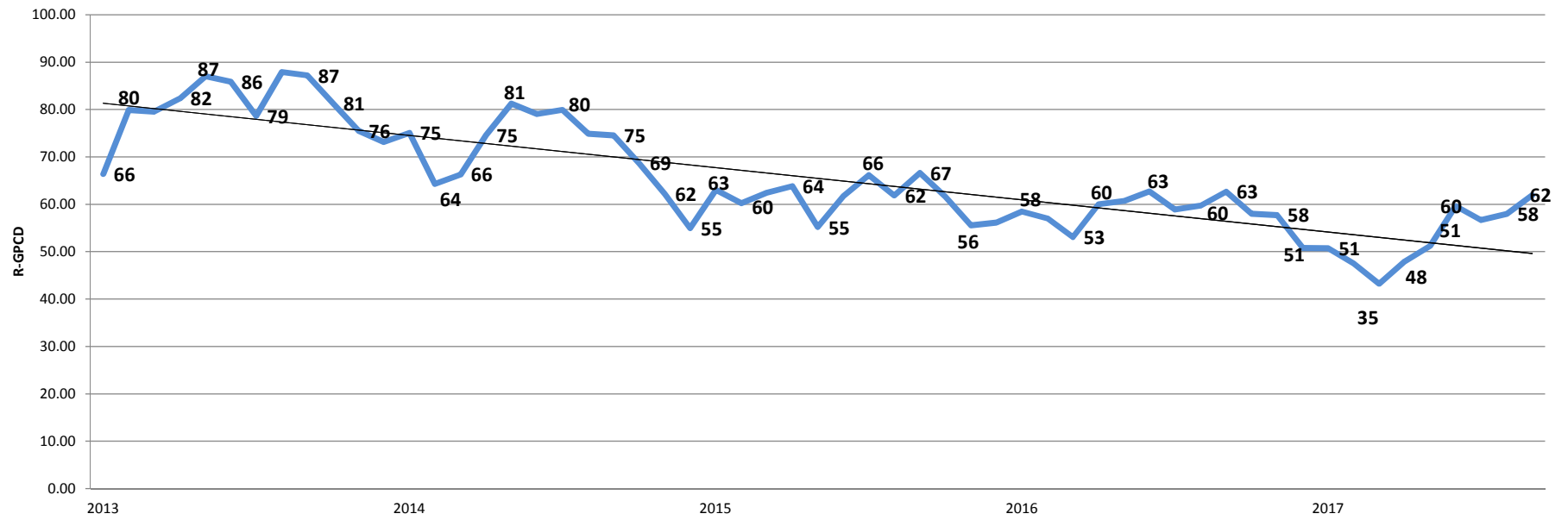


District Baseline and GPCD Targets (Gross Production)		
Description	Year	Amount (gpcd)
Baseline GPCD	2008	133
Maximum Allowable Target	2020	126
Interim GPCD Target	2015	125
2020 GPCD Target	2020	117
2014 GPCD	2014	115
2015 GPCD	2015	89
2016 GPCD	2016	79
2017 GPCD (January-September)	2017	82

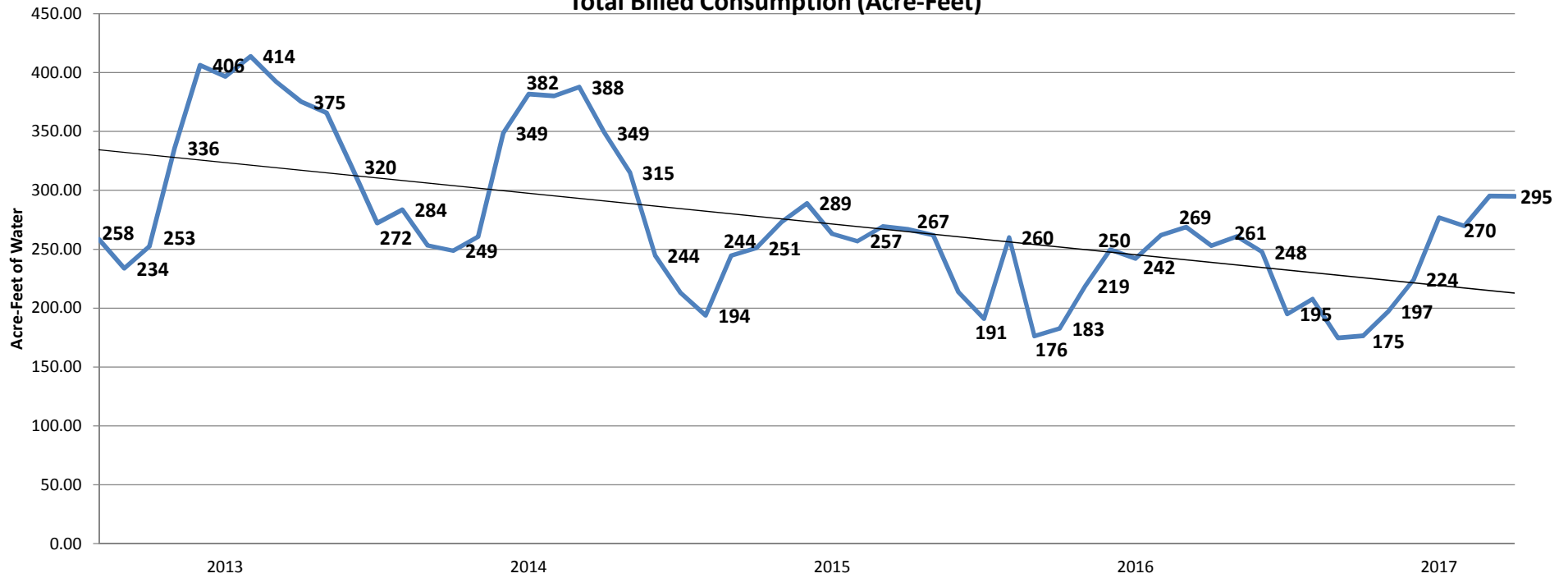


2013-2017 Residential Gallons-per-Capita-Day

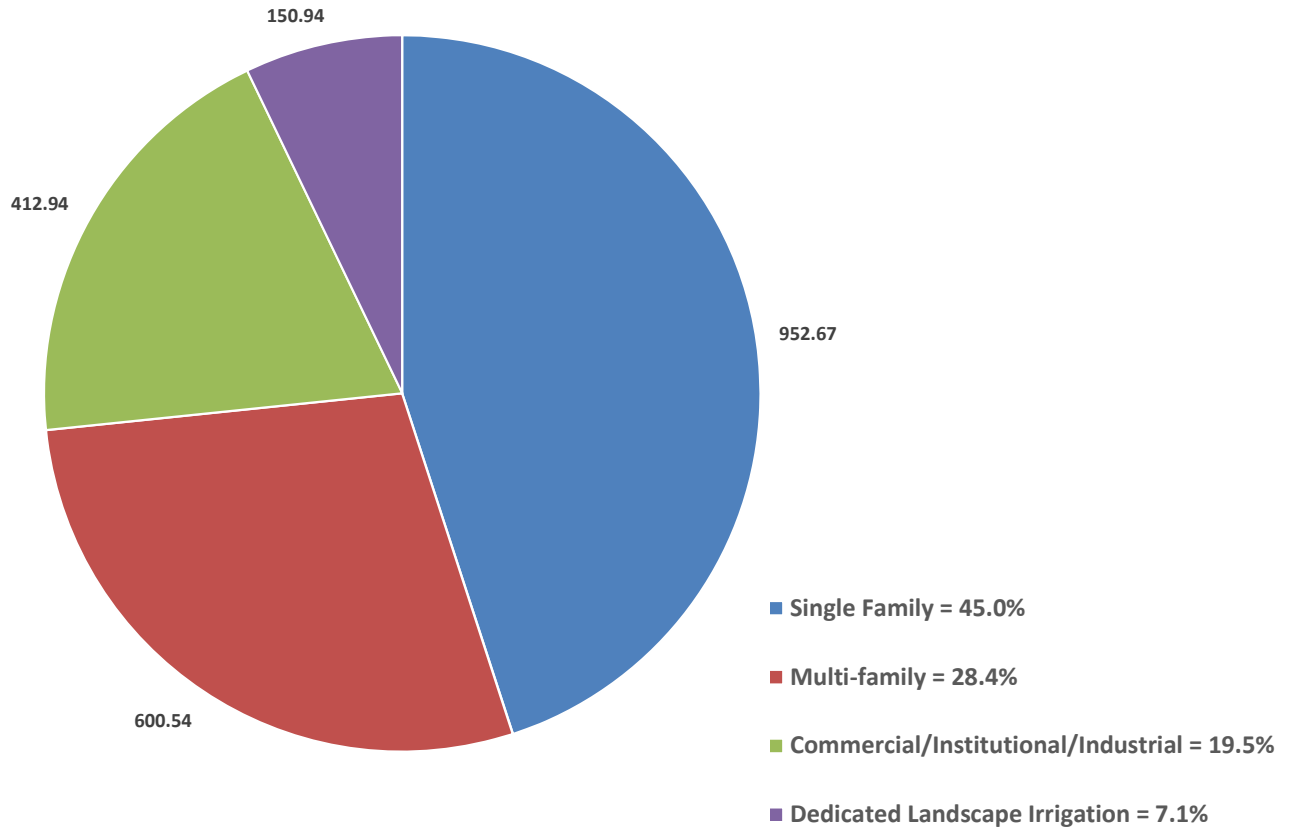
2013 - 2017



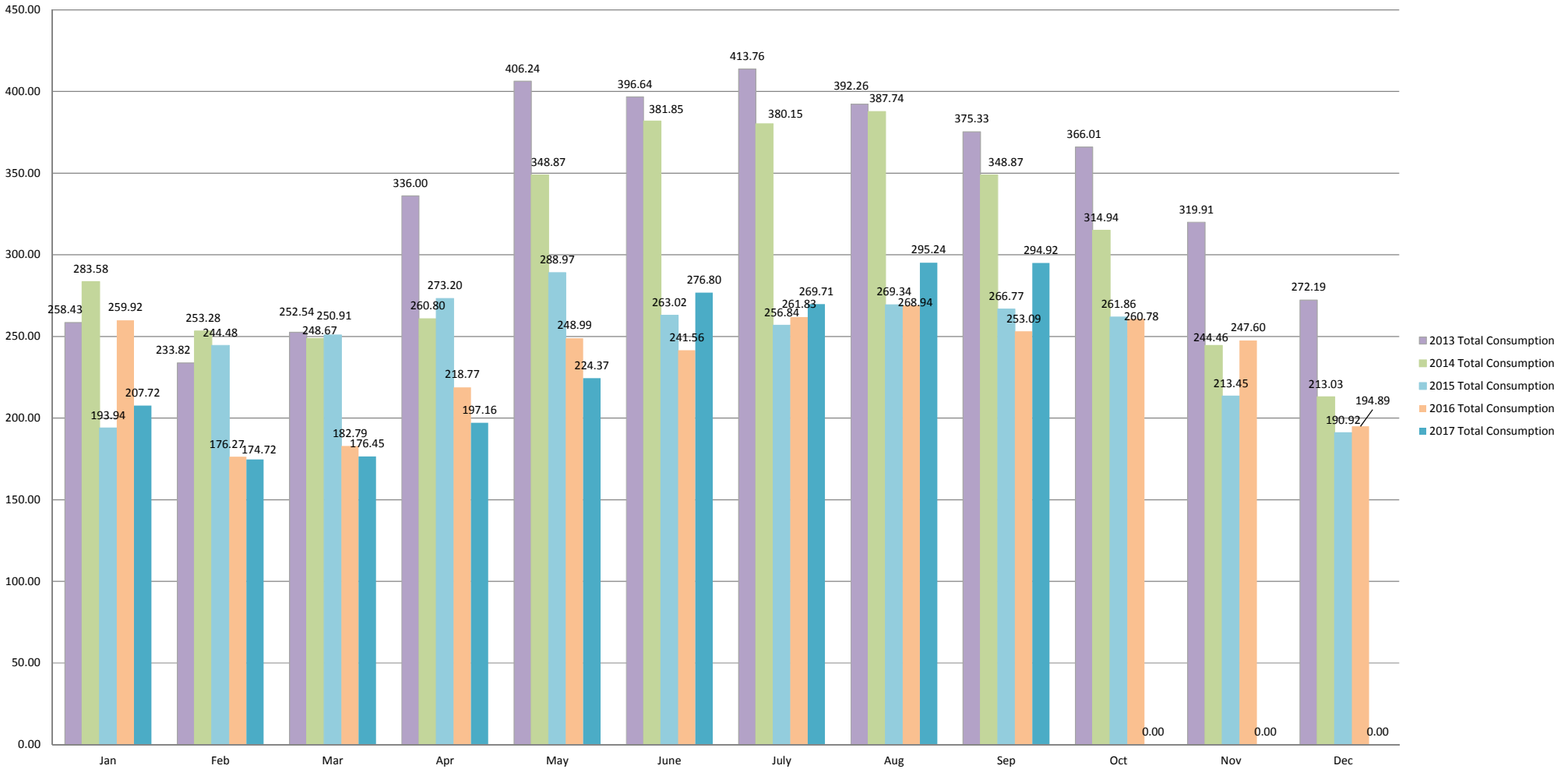
2013 - 2017
Total Billed Consumption (Acre-Feet)



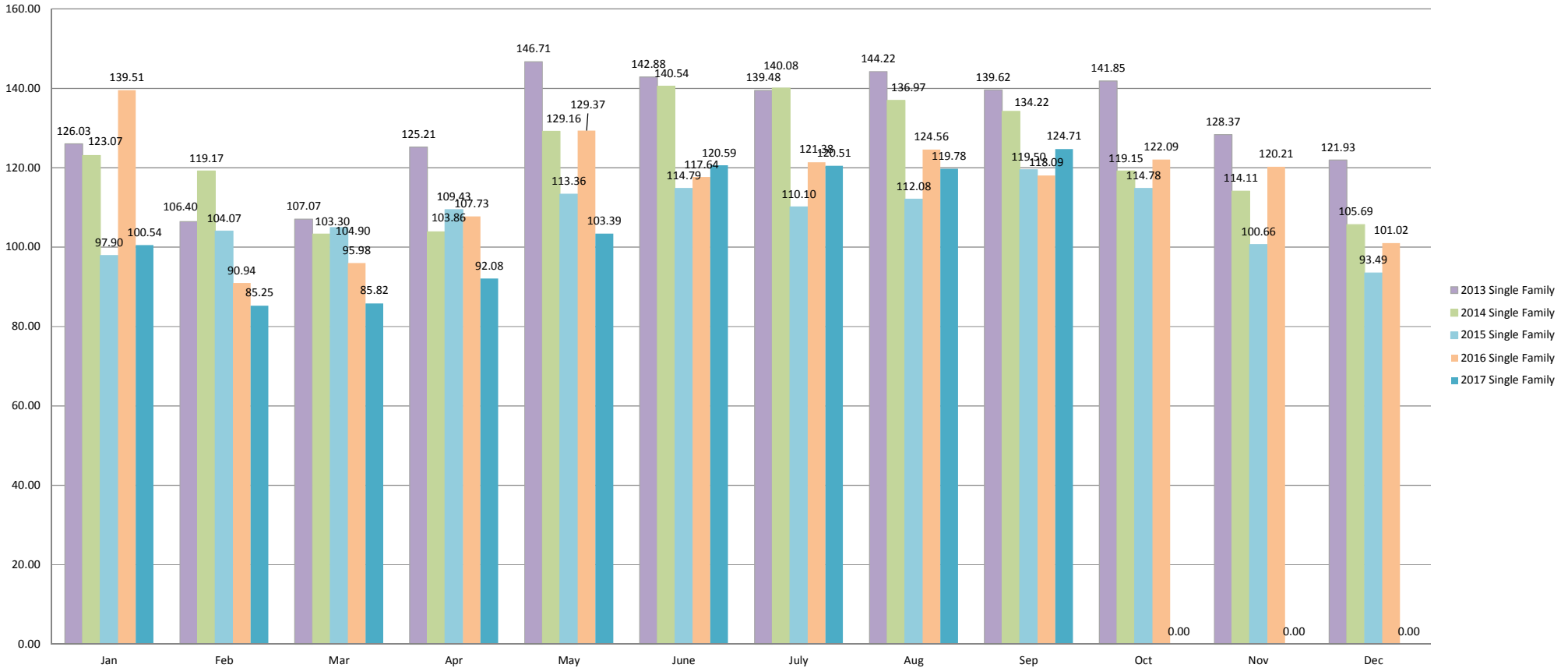
Total Billed Consumption 2017 Year-To-Date (Acre-Feet)



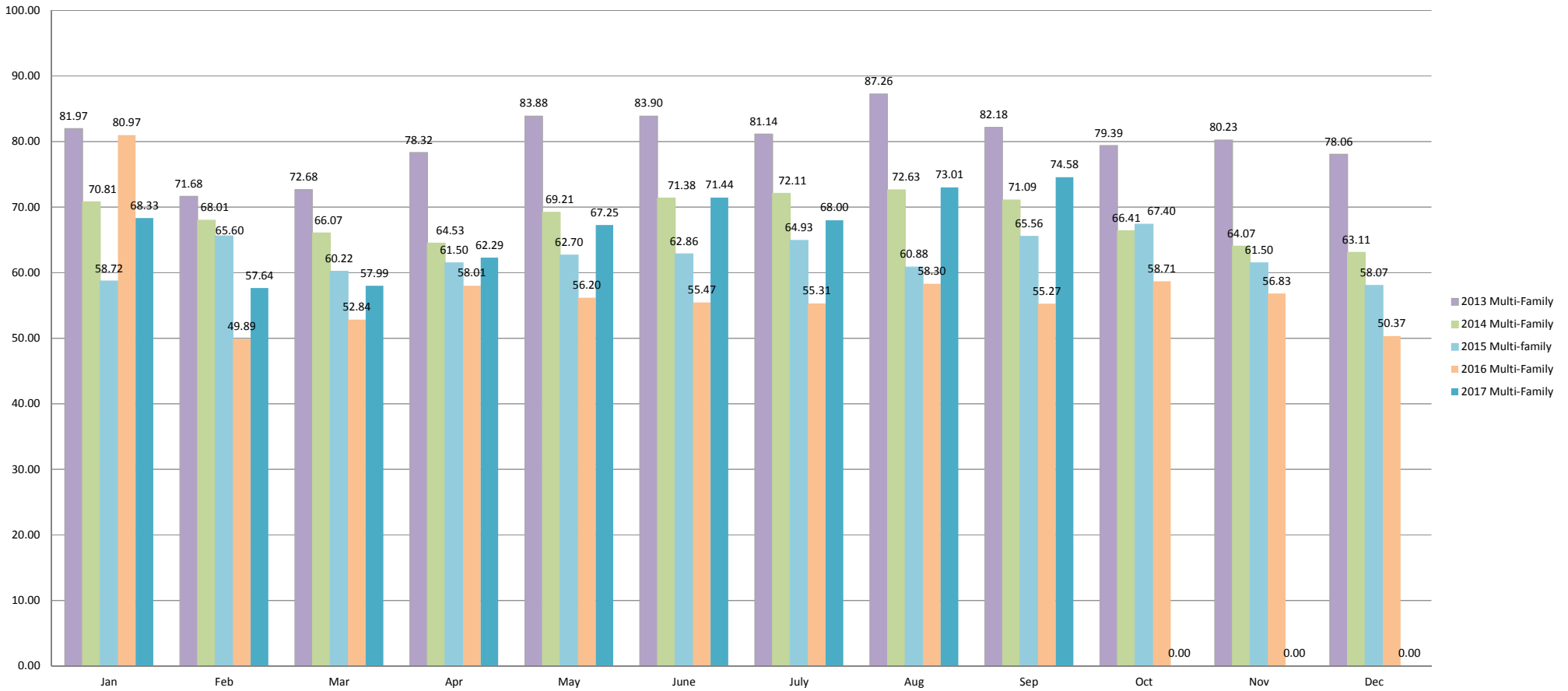
2013-2017 Total Consumption by Month (Acre-Feet)



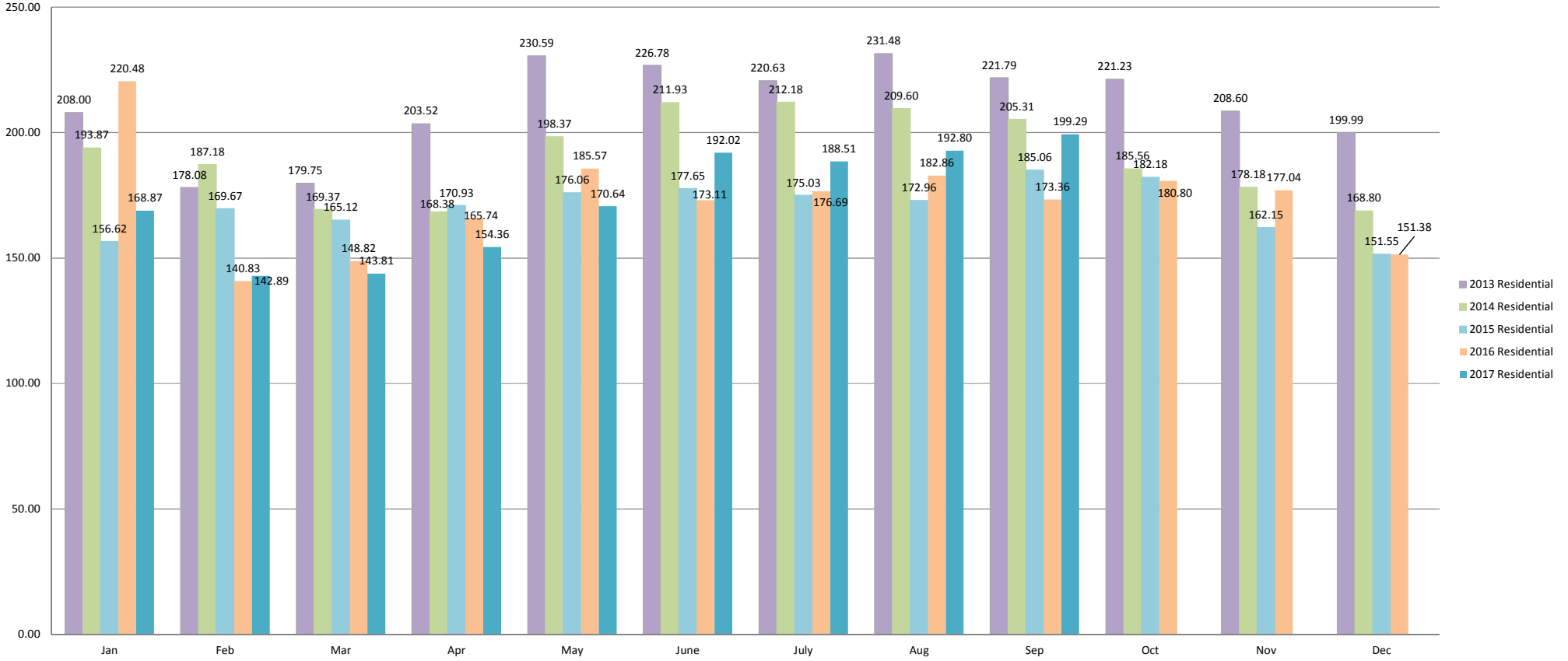
2013-2017 Single Family Consumption by Month (Acre-Feet)



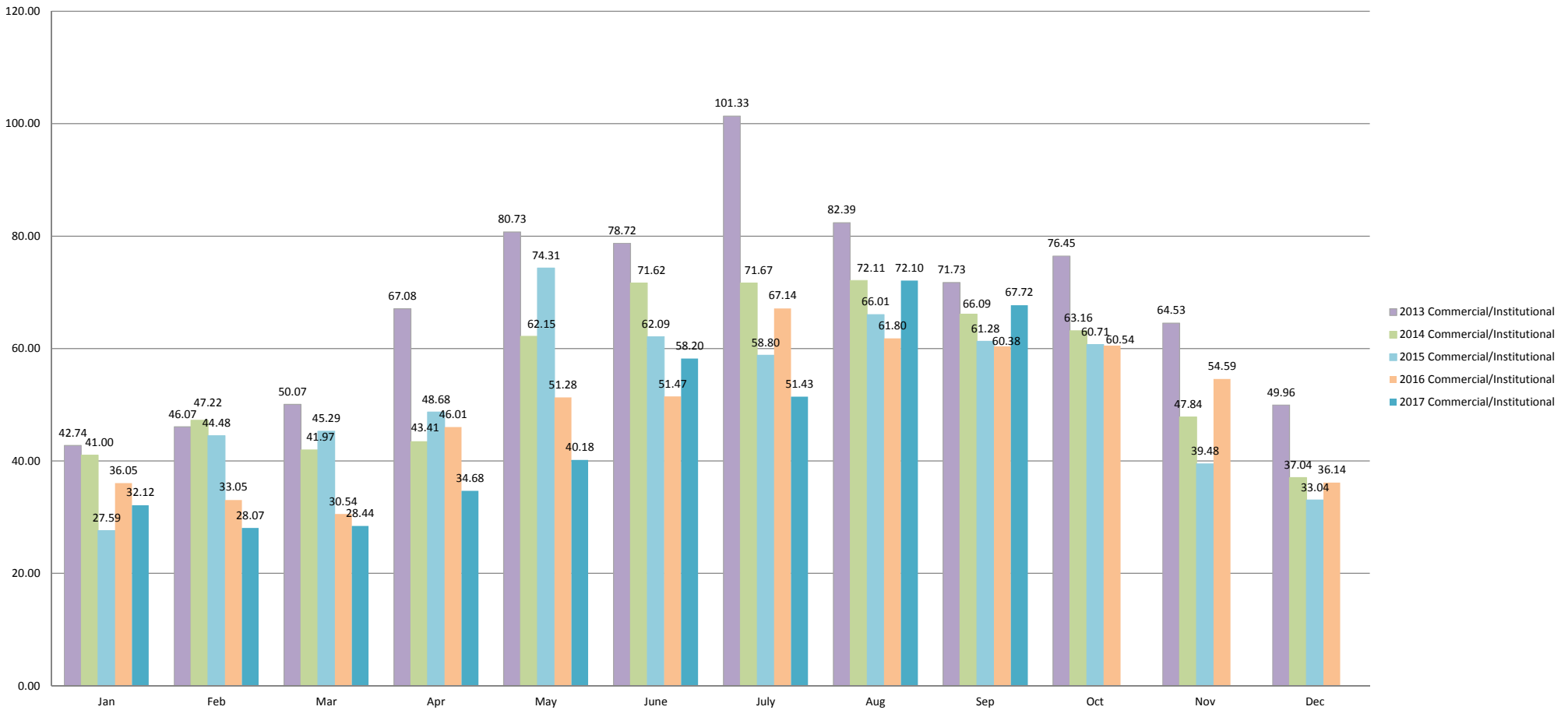
2013-2017 Multi-Family Total Consumption by Month (Acre-Feet)



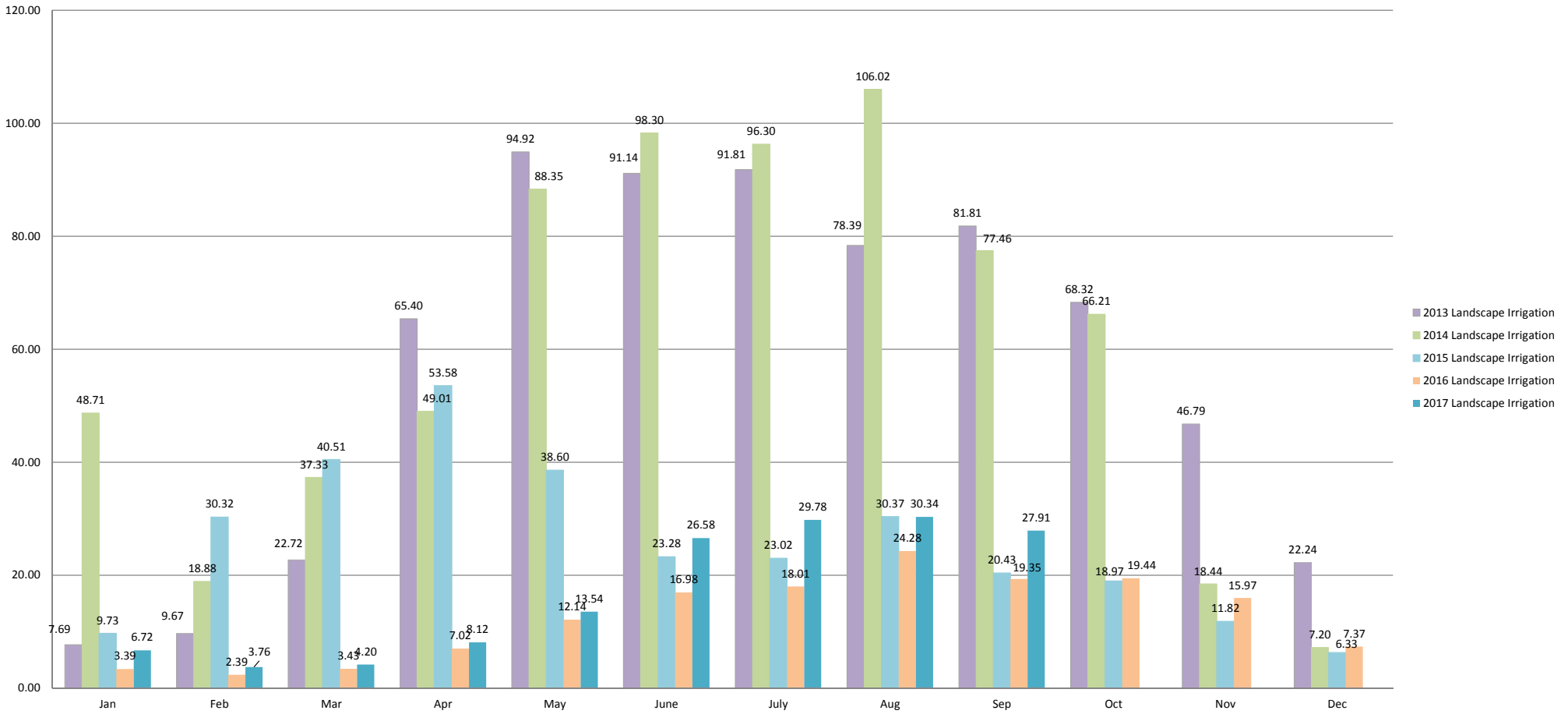
2013-2017 Residential Total Consumption by Month (Acre-Feet) (Single-Family and Multi-family Combined)

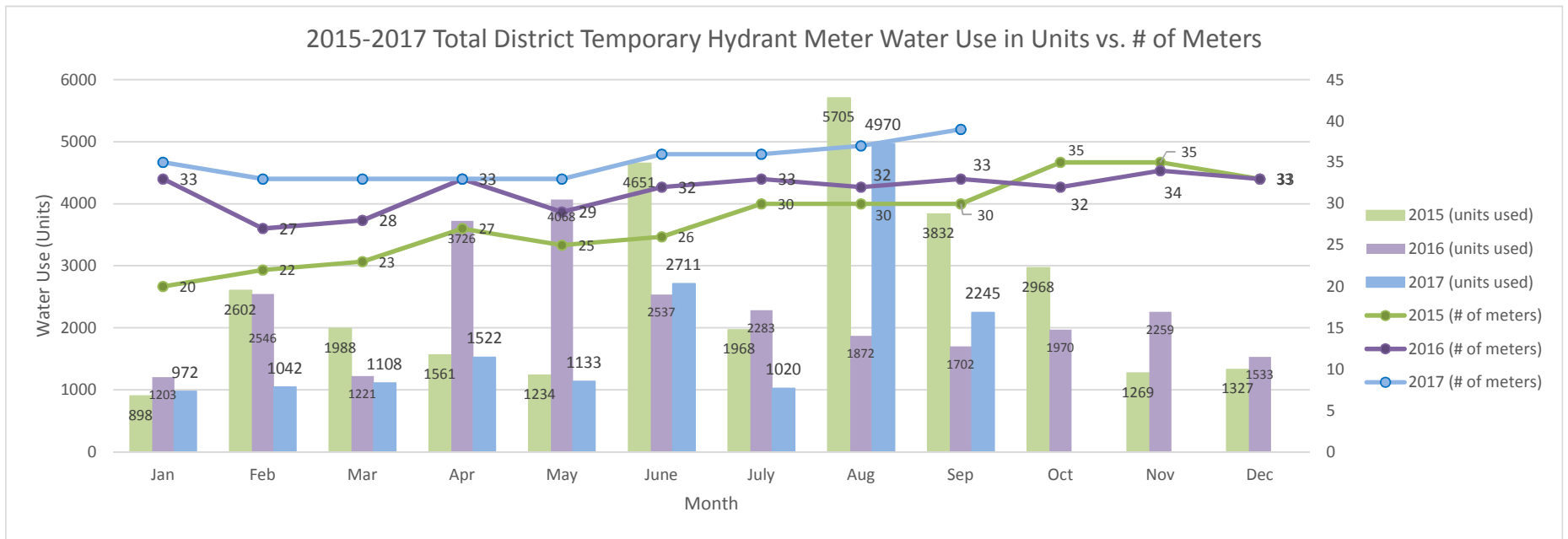


2013-2017 Commercial/Institutional Consumption by Month (Acre-Feet)



2013-2017 Landscape Irrigation Consumption by Month (Acre-Feet)

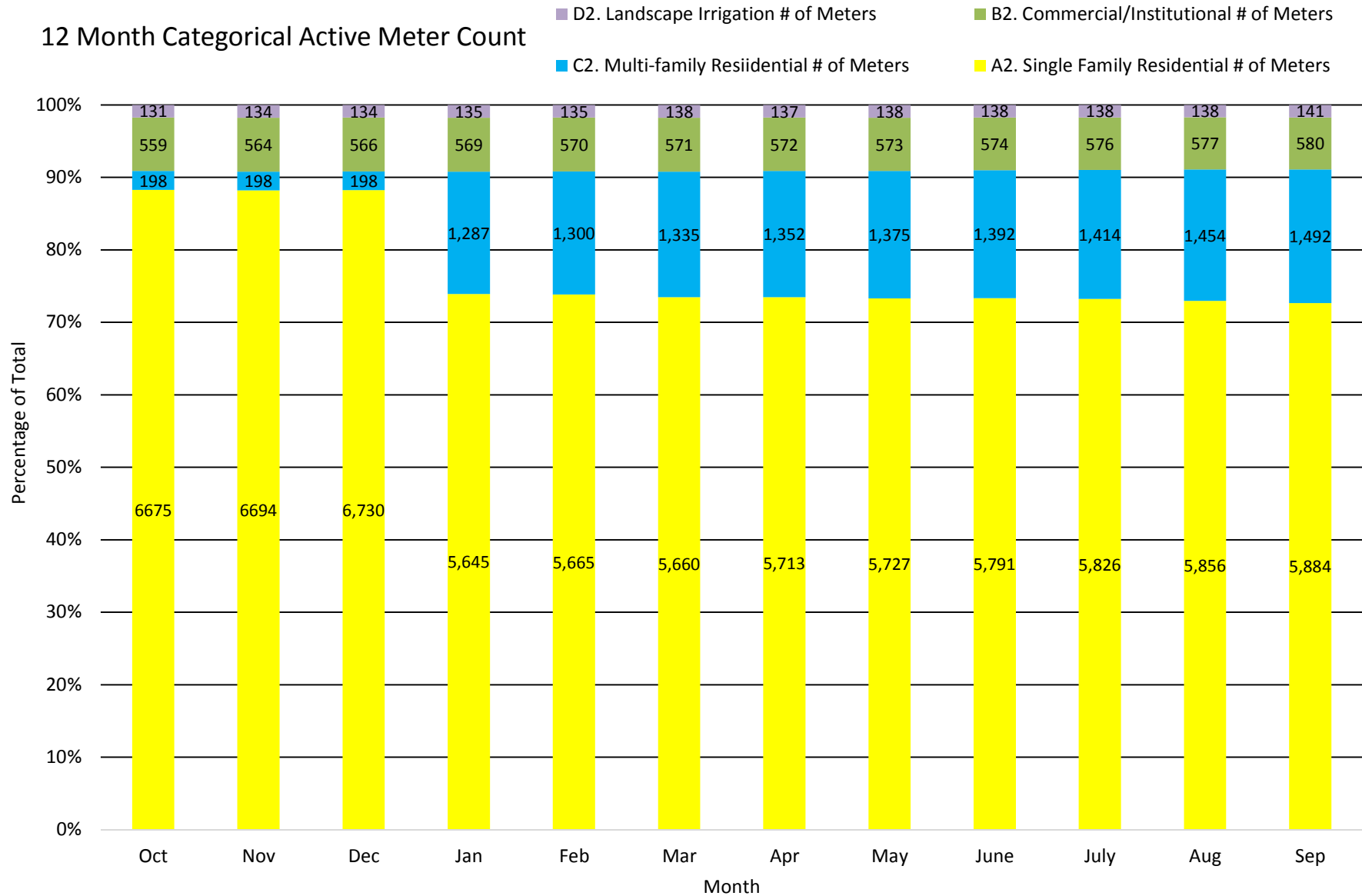




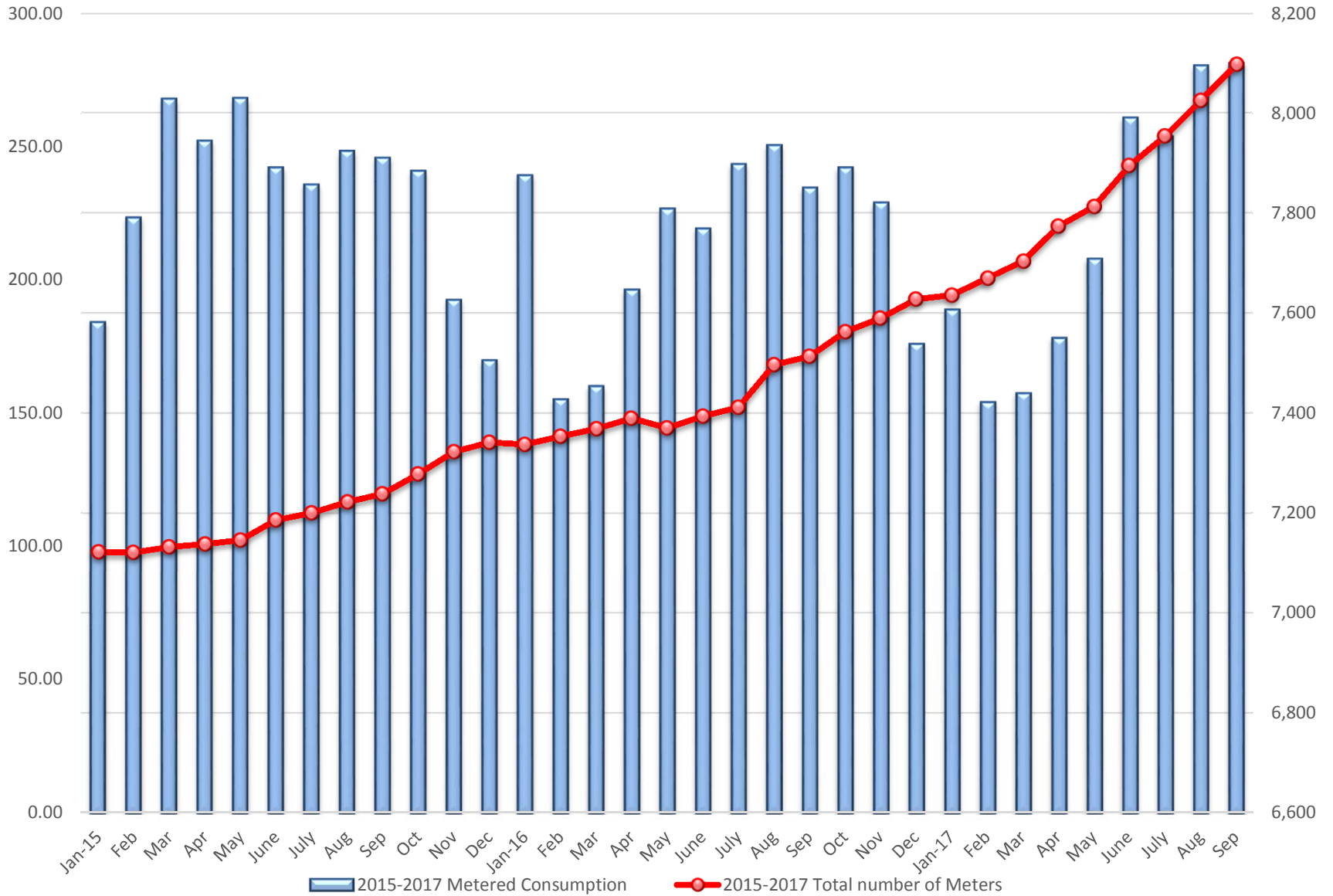
Temporary Meter Water Use: Percentage of Total Consumption

Past 12 Months												
	Oct	Nov	Dec	Jan	Feb	Mar	Apr	May	June	July	Aug	Sep
Consumption (HCF)	113,603	107,860	84,901	90,487	76,112	76,868	85,890	97,742	120,581	117,495	128,613	110,252
Temporary Hydrant Use (HCF)	1970	2259	1533	972	1042	1108	1522	1133	2711	1020	4970	2245
Percentage	1.7%	2.1%	1.8%	1.1%	1.4%	1.4%	1.8%	1.2%	2.2%	0.9%	3.9%	2.0%

12 Month Categorical Active Meter Count



2015 - 2017 Active Meter Count vs. Metered Consumption in Acre-Feet



	Estimated savings achieved by suspension of golf course supply	Saving actually achieved by all other categories combined
Jan-17	7%	9%
Feb-17	8%	27%
Mar-17	9%	29%
Apr-17	18%	31%
May-17	18%	25%
Jun-17	18%	17%
Jul-17	18%	15%
Aug-17	14%	18%
Sep-17	15%	12%
Oct-16	14%	23%
Nov-16	10%	15%
Dec-16	5%	24%